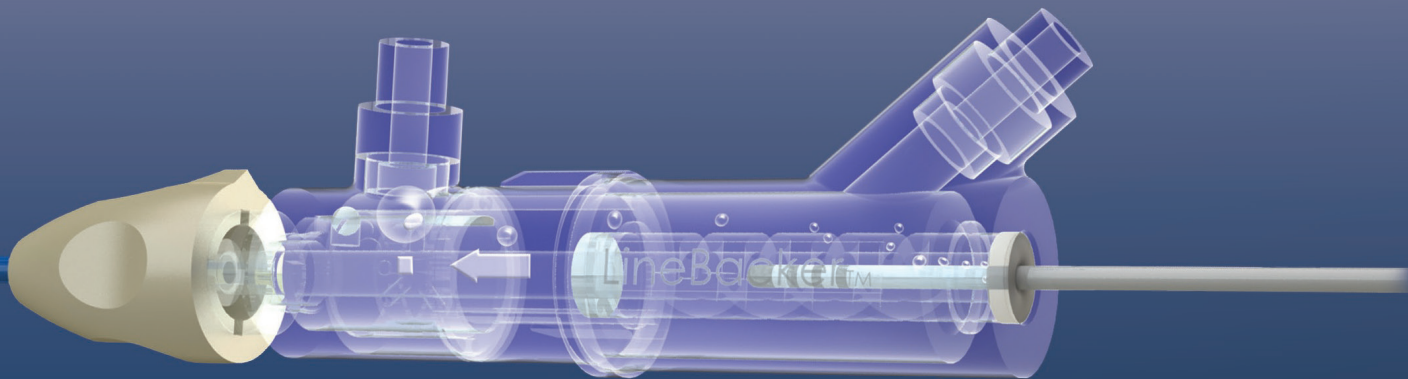


# THE ULTIMATE TRANSSEPTAL SYSTEM

## AirBloc® Linebacker Introducer Sheath Kit



- Maximum Visibility
- Enhanced Transseptal Navigation
- Dependable Operator Control
- Exceptional Procedural Efficiency

## Unsurpassed Safety

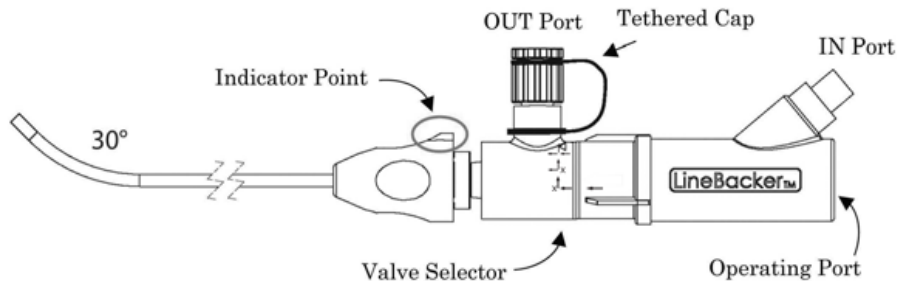
The AirBloc® LineBacker Introducer Sheath is engineered to provide superior handling and accurate push-ability for safe and successful transseptal navigation.

AirBloc® Technology is designed to help the operator visibly identify air emboli, in isolation, for easy removal reducing potential risk to patients.

# Product Features

- Catheter insertion visibility
- Single handed sheath rotation and control
- Braided sheath for flexibility and torqueability
- Lubricious inner and outer coating
- Radiopaque sheath and dilator
- Platinum marker at distal tip
- Tapered soft distal tip
- Smooth tip to dilator transition

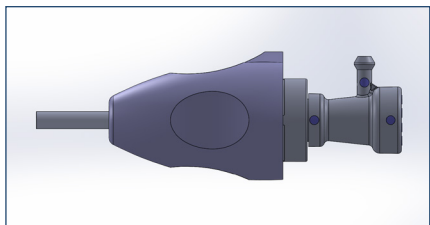
## LineBacker Sheath with Air Protection



### LineBacker Specifications and Ordering Information

LineBacker Products	AirBloc™ Featured Introducer Sheaths		
Product Name	Product Description/Curve	Usable Sheath Length/French Size	Model Number
LineBacker AF	Ablation transeptal introducer, 45 degree curve	62cm/8.5	LB162AF
LineBacker VTR	Ablation introducer with Right Ventricular curve	62cm/8.5	LB262VTR
LineBacker VTL	Ablation introducer with Left Ventricular curve	62cm/8.5	LB262 VTL

## Vectra Sheath



- Single handed rotation and control
- Lubricious inner and outer coating
- Braided sheath for flexibility and torqueability
- Lubricious inner and outer coating
- Radiopaque sheath and dilator
- Platinum marker at distal tip
- Tapered soft distal tip
- Smooth tip to dilator transition

### Vectra Specification and Ordering Instructions

Vectra Products	Standard Featured Introducer Sheaths		
Product Name	Product Description/Curve	Usable Sheath Length/French Size	Model Number
Vectra AF	Ablation introducer, 45 degree curve	62cm/8.5	V562AF
Vectra VTR	Ablation introducer with Right Ventricular curve	62cm/8.5	V662VTR
Vectra VTL	Ablation introducer with Left Ventricular curve	62cm/8.5	V662VTL

**For orders and customer service phone: 888-988-2684**

Before use, consult product labels and inserts for any indications, contraindications, hazards, warnings, cautions, and instructions for use.

AirBloc is a registered trademark of epDynamics, Inc. ©2017 epDynamics, Inc. All rights reserved. SAM-001 (Rev 08/17)

epDynamics, Inc. Web: [ep-dynamics.com](http://ep-dynamics.com)



Distributed by: Anthem Medical. 2111 Stanford Avenue, St Paul, MN. 55105